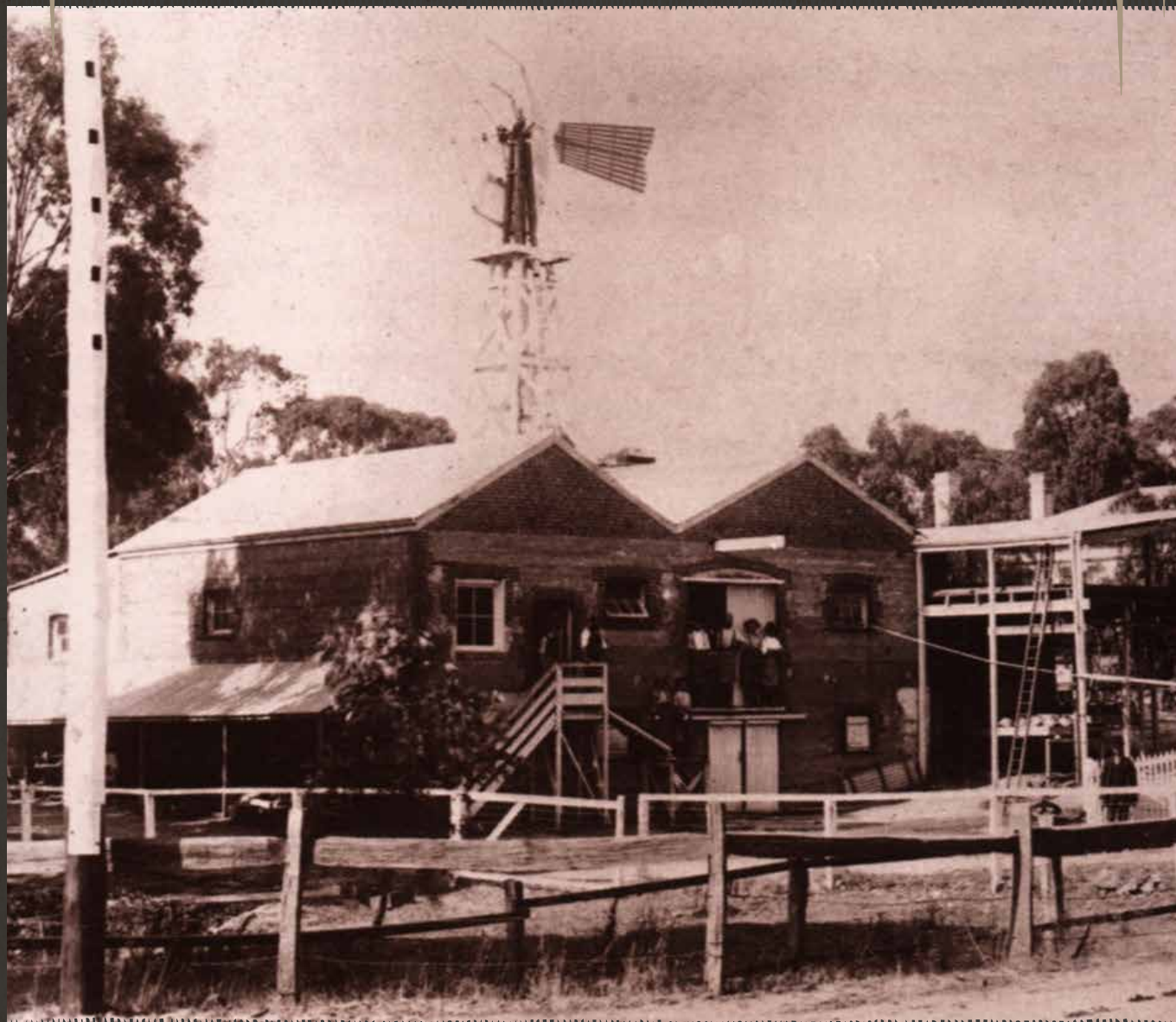


# SOUTH AUSTRALIAN CROWN SEALS



## OF THE TWENTIETH CENTURY



VOLUME 3

BY BENJAMIN LAWRENCE

# Updates

Volume 3 Version 2

Added Crystal Soft Drinks Company

Added Olympic Cordial Company

New Leed & Leed Low Cal Aluminium Caps

New Loys and Associated Home Delivery Aluminium Caps

New Cottees Aluminium Caps



# **SOUTH AUSTRALIAN CROWN SEALS OF THE TWENTIETH CENTURY**

**BY BENJAMIN LAWRENCE**

**VOLUME 3**

Presented within the pages of this book is a comprehensive compilation documenting all the South Australian Crown Seal bottle caps that were known to exist throughout the twentieth century. Encompassing a diverse range of crown seals, including classic variants, ring pulls, and aluminium twist tops found on soda and beer bottles, this publication serves as a testament to the dedication and collaboration of numerous individuals. Special recognition is extended to Bruce Tainton and Michael Doulton for their invaluable contributions regarding beer caps, as well as a heartfelt appreciation to Michael Bowley for his invaluable assistance with the soft drink caps. Without their generous support, this document would not have come to fruition.

The illustrations of the crown seals featured in this book have been meticulously recreated digitally by the author, resulting in slight variations between the actual crown seals and their representations within these pages.

Furthermore, each crown seal has been assigned a unique identification number, which will be detailed towards the conclusion of this book. These numbers have been devised to aid collectors in identifying both the caps included in this publication and any additional caps that may not be featured. The numbering system has been updated from the previous version (V1.0) to align with the labels utilized by the respective companies. For further information, please visit my website at <http://beeradelaide.com>.





# Appelt's

**NURIOOTPA**  
**5.311.001**  
**1858 TO 1975**  
**F164**



C00.0010



C00.0020



C00.0030



C00.0040



C00.0050



C40.0010



C40.0020



C41.0010



C41.0020



C42.0010



C43.0010



C44.0010



C54.0010



C45.0010



C46.0010



C40.0030



C47.0010



C48.0010



C41.0030



C49.0010





C50.0010



C42.0020



C51.0010



C52.0010



C52.0020



C53.0010



C43.0020



C44.0020



C54.0020



C55.0010



C45.0020



C46.0020



C46.0030



C40.040



C47.0020



C48.0020



C48.0030



C48.0040



C56.0010



C41.0040



C49.0020



C50.0020



C57.0010



C42.0030



C42.0040





C58.0010



C51.0020



C52.0030



C53.0020



C59.0010



C43.0030



C24.0010



C24.0020



C26.0010



C28.0010



# THOMAS BROWN & SONS

WALLAROO  
5.473.5001  
1912 TO 1952



C00.0010



# CHANDLERS

MANNUM

5.238.S001

1945 TO 1988



C00.0010



C00.0020



C00.0030



---

# CLARE MINERAL WATERS

MAIN STREET, CLARE

5.075.001

1858 TO 1974



C00.0010



0C00.0020



C00.0030



C00.0030



C00.0050





C40.0010



C40.0020



C41.0010



C44.0010



C45.0010



C45.0010



C46.0010



C52.0010



C49.0010



C49.0020



C51.0010



**COCA COLA**  
**PORT ROAD, THEBARTON**  
**5.001.S044**  
**F45**



C01.0010



C01.0020



C01.0030



C01.0040



C01.0050







C01.0060



C01.0070



C01.0080



C01.0090



C01.0100



C01.0110



C01.0120



C01.0130



C01.0140



C01.0150



C01.0160



A01.0010



A01.0020



A01.0030



A02.0010



A03.0040



C03.0010



C03.0020



C03.0030



P01.0010



A03.0050



C03.0040



C03.0050



C03.0060





C03.0070



C03.0080



C03.0090



A03.0010



A03.0020



A03.0030



A03.0040



C20.0010



C20.0020



A06.0010



C06.0010



C06.0020



C06.0030



C06.0040



A07.0010



C04.0010



C04.0020



C04.0030



C04.0040



C04.0050



C04.0060



C04.0070



C04.0080



A04.0010





C11.0010



C11.0020



C11.0030



C11.0040



# PORT PIRIE 5.001.S044 F47



C01.1010



C01.1020



C01.1030



C01.1040



C01.1050



C01.1060



C03.1010



C03.1020



C03.1030



C06.1010



C04.1010



C04.1020



C11.1010



# COLEGATE & SON

JUNCTION ROAD, ROSEWATER

5.001.S045

C1946 TO C1971



C00.0010



---

# CONDON & McMAHON

PORT PIRIE

5.370.S003

1918 TO C1952



C00.0010

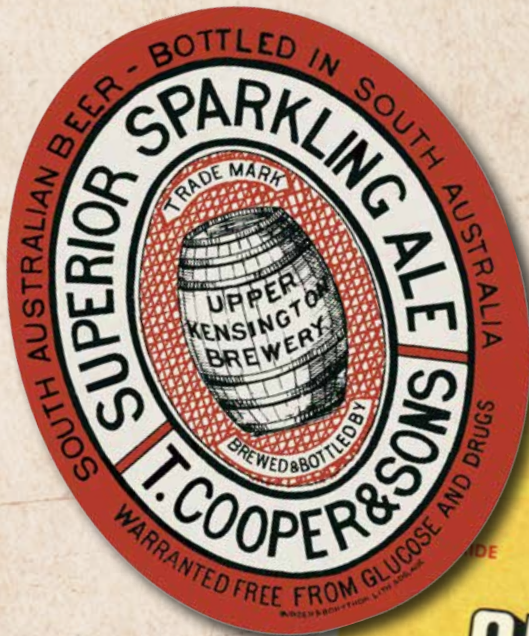


# Coopers

## REGENCY PARK 5.001.020 1862 TO PRESENT



<b>Cooper &amp; Sons</b> George Street, Norwood High Street, Kensington	<b>1862 to 1881</b>
<b>T Cooper &amp; Sons</b> Statenborough Street, Leabrook	<b>1881 to 1923</b>
<b>Cooper &amp; Sons Ltd</b> <b>Coopers Brewery Ltd</b> South Road, Regency Park	<b>1923 to 1989</b> <b>1989 to Present</b>





C00.0010



C00.0020



C00.0030



C00.0040



C00.0050



C00.0060



C00.0070



C00.0080



C00.0090



C00.0100



C03.0010



C03.0020



C03.0030



C00.0200



C00.0210



C02.0010



C02.0020



C00.0250



C00.0260



C00.0300



C06.0010



C06.0020



C16.0010



C16.0020



C27.0010





C03.0040



C00.0350



C00.0400



C11.0010



C11.0020



C22.0010



C22.0020



C00.0530



C00.0540



C00.0550



C00.0560



C00.0500



C00.0510



C00.0500



C00.0700



C00.0710



C00.0720



C00.0730



C00.0800



C00.0810



C00.0830



C00.0820



C00.0840



C00.0900



C00.0910





C07.0010



C08.0010



C08.0020



C14.0010



C25.0010



C23.0010



C24.0010



C24.0020



C00.0E10



C00.0E20



C00.0E30



C00.0E40



C70.0010



C70.0020



C70.0030



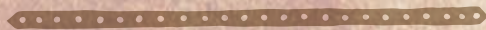
C70.0040



CS7.0010



CS8.0010







R00.0010



R00.0020



R00.0030



R00.0070



R00.0080



R00.0090



R00.0100



R00.0040



R00.0060



R00.0050



R24.0010



R23.0010



R14.0010



# Cottee's

ST PETERS 5.001.S046

1957 TO C1973

F111



C01.0010



C02.0010



C03.0010



C01.0020



C04.0010



C05.0010



C02.0020



C02.0030



C03.0020



C03.0030



C01.0030



C04.0020



A02.0010



A02.0020



A04.0010



A06.0010



A07.0010



A07.0020



A08.0010



# COURTNEYS

## MURRAY BRIDGE 5.287.S002



C01.0010




---

# CRYSTAL CORDIAL CO

## PORT AUGUSTA 5.355.002 1868 TO C1975



C20.0010



C100.0010



C107.0010



C108.0010



C105.0010



C153.0020



C152.0020



C154.0010



# CRYSTAL SOFT DRINKS

ADELAIDE  
5.001.S262



C01.0010



---

## EDMONDS

GLEN OSMOND  
5.001.S069  
C1948 TO 1980S  
F293



C00.0010



C00.0020



C00.0030



C01.0010



C04.0010



C07.0010



C01.0020



C02.0010



C03.0010



C03.0020





C04.0020



C05.0010



C06.0010



C07.0020



C08.0010



C03.0030



# THOMAS FARMER

**NARACOORTE**

**5.299.5002**

**1883 TO 1960**



C00.0010



# FERGUSON'S

## MOUNT GAMBIER 5.280.S004

### 1920 TO 1976

A. C. Haig  
Edward & Bertha Street, Mount Gambier  
S. R. Haig  
Fergusons  
Sold to Pepsi Co.

1920 to 1945  
1920 to 1976  
1945 to 1947  
1947 to 1976  
1976



5.280.S007.C00.0010



C00.0010



C00.0020



C00.0030



C01.0010



C02.0010



C03.0010




---

# FOOTNERS

## ARTHUR ST, PORT PIRIE

### 5.370.S004

### 1920S TO C1953



C00.0010



# FOUREUR'S

MURRAY STREET, MITCHAM  
5.001.029  
1875 TO 1950



C00.0010



C00.0020



# GEISEL

MURRAY BRIDGE  
5.287.5004  
1931 TO C1980S



C00.0010



C00.0020



C00.0030



C01.0010



C02.0010



C03.0010



C04.0100



# R W GOUDIE

**RAILWAY TERRACE, PETERBOROUGH  
5.339.S004  
1895 TO 1976**

Hygia Aerated Waters (R W Goudie)  
Robert W Goudie  
Robert Goudie

1895 to 1976  
1895 to 1957  
1957 to 1976



C00.0010



C00.0020



---

# F. C. GRUBB

**CNR SMITH & CROSS STREETS, GLADSTONE  
5.141.S005  
1911 TO PRESENT  
F97**

Gladstone Aerated Waters  
F. C. Grub  
Trend Drinks  
F. C. Grubb

1911 to 1914  
1914 to 1965  
1965 to 2002  
2002 to 2015

In 2015 Purchased by Beechworth Honey, Production moved to NSW,  
but still manufacture the F.C. Grubb brand.



C00.0010



C01.0010



C02.0010



C03.0010





# HALLMARK DRINKS

LOXTON

5.227.S001

C1954 TO 1970S

F172



C00.0010



C00.0020



C00.0030



C00.0040



C15.0010



C16.0010



C08.0010



C08.0020



C07.0010



C07.0020



C04.0010



C17.0010



C17.0020



C13.0010



# Halls

**NORWOOD  
5.001.S098  
1851 TO 2000  
F13**



C00.0010



C00.0020



C00.0030



C09.0010



C09.0020



C09.0030



C14.0010



C15.0010



C15.0020



C15.0030



C19.0010



C19.0020



C24.0010



C33.0010



C33.0020



C35.0010





C02.0010



C02.0020



C02.0030



C03.0010



C06.0010



C06.0020



C09.0040



C09.0050



C09.0060



C10.0020



C38.0010



C14.0020



C14.0030



C14.0040



C15.0040



C15.0050



C19.0040



C19.0030



C19.0050



C24.0020



C24.0030



C24.0040



C41.0010



C41.0020





C31.0020



C33.0030



C33.0040



C33.0050



C37.0020



C39.0010



C39.0020



C02.0040



C09.0070



C14.0050



C15.0060



C19.0070



C40.0010



C24.0050



C37.0030



C08.0010



C08.0100



C08.0200



C08.0300





C02.0050



C06.0040



C06.0050



C09.0080



C13.0010



C14.0060



C15.0070



C19.0080



C24.0060



C30.0010



C43.0010



C33.0060



C35.0020



C37.0040



C39.0030



C09.0090



C14.0070



C15.0080



C24.0070





A00.0010



A00.0020



A06.0010



A09.0010



A42.0010



A15.0010



A15.0020



A14.0010



A24.0010



A24.0020



**COCA COLA OWNED HALLS  
PORT ROAD, THEBARTON  
5.001.S044  
F45**



C115.0010



C99.0010



C99.0020



A115.0010



A99.0010



A99.0020



A99.0030



P99.0010



# HAYDONS

GAWER, PORT ADELAIDE & BEVERLEY

5.001.S105

1916 TO c1973

W.L. Haydon  
W.W. Haydon

1916 to 1920  
1920 to c1971



C14.0010



C14.0020



C14.0030



C14.0040



C14.0050



# HELEYS BERRI

5.028.S004

1922 TO 1980S



C01.0010



C01.0010



C02.0010



C03.0010



C04.0010



C04.0010



C05.0010



C05.0010



C06.0010



C06.0020





C06.0030



C07.0010



C07.0020



C08.0010



C09.0010



C10.0010



C10.0010



C11.0010



C11.0010



C12.0010



C12.0010



C13.0010



C13.0010



C14.0010



C14.0010



C15.0010



C16.0010



C17.0010



C20.0010



A14.0010



A18.0010





# F. HUMPHRIS & SONS

JAMESTOWN 5.179.01

1879 TO 1966

Emu Brewery (Edmund Humphris)  
Edmund Humphris  
F Humphris & Sons  
Frederina Humphris  
F Humphris & Sons Ltd  
Jamestown Butter & Trading Co.

1879 to 1882  
1879 to 1882  
1882 to 1902  
1882 to 1902  
1902 to 1932  
1932 to 1966



C00.0010



C20.0010



---

# ISLAND BEVERAGES

KANGAROO ISLAND

5.196.S001



C00.0010



# JACKA BROTHERS

MELROSE 5.250.02

1877 TO 1934



C00.0010



C00.0020



C23.0010



---

# KADINA MINERAL WATERS

KADINA 5.182.S003

1906 TO 1960



C00.0010



C00.0020



C00.0030



---

# KC BEVERAGES

SALISBURY 5.001.S132

1958 TO UNKNOWN



C00.0010



# KINGSTON CORDIALS

KINGSTON 5.197.S001



C00.0010



C00.0010



---

# KOOL SPA

EDWARDSTOWN 5.001.S137

1940S TO C1977



C01.0010



---

# LADDS

ST PETERS 5.001.S139

1860 TO 1957



C50.0010



# LAMMING'S DRINKS

**KILBURN  
5.001.S140**



C00.0010



---

# LINCOLN SPRINGS

**PORT LINCOLN  
5.366.S004  
1930 TO 1990S  
F203**



C00.0010



C00.0020



C00.0030



C00.0040



# LION BREWING & MALTING

**NORTH ADELAIDE  
5.001.051  
1870 TO 1970**



C010.0010



C00.0020



C58.0010



C63.0010



---

# LOVELLS

**MAITLAND & ELIZABETH  
5.001.S149**



C00.0010



C00.0020



C00.0030



C01.0040



C01.0050



# LOY'S

## ASSOCIATED HOME DELIVERY

### GLYNDE

### 5.001.S153

### F122



A101.0010



A102.0010



A103.0010



A15.0010



C01.0010



C02.0010



C03.0010



C04.0010



C05.0010



C06.0010



C07.0010



C08.0010



C09.0010



C10.0010



C11.0010



C12.0010



C13.0010



C14.0010



C15.0010



# A J MALYCHA

## PORT PIRIE 5.370.S007



C00.0010



---

# MCBRIDES

## BARMERA

### 5.024.S002



C00.0010



# **MINESPA**

**BURRA 5.053.S006**  
**1948 TO C1970S**



C00.0010



C00.0020



C00.0030



---

# **MOLONYS**

**MOUNT GAMBIER**  
**5.280.005**  
**1868 TO PRESENT**



C00.0010



C00.0020



C00.0030



C00.0040





# MOYLES

## PORT PIRIE 5.370.S009

### 1894 TO 1968



C00.0010



C00.0020



C00.030



C02.010



# COCA COLA PORT PIRIE 5.001.S044

## 1968 TO 1982

### F47



C141.0010



C130.0010



C133.0010



C133.0020



C142.0010



C135.0010



C135.0020



C135.0020



C143.0010



C139.0010



C144.0010



C140.0010



C145.0010



C150.0010



C153.0010





C151.0010



C151.0010



C152.0010



C152.0010



C149.0010



# NEPTUNE TANUNDA 5.442.S001 1958 TO 1987



C00.0010



C20.0010



C21.0010



# OLD LION HOTEL

NORTH ADELAIDE

5.001.M002

1986 TO 1995



C00.0010



C20.0010



A30.0010



---

# OLYMPIC CORDIALS

PORT PIRIE

5.370.S010



C01.0010



# PIKES

## OAKBANK 5.313.002

### 1886 TO PRESENT



C00.0010



C00.0020



C57.0010



C57.0010



C63.0010



C63.0020



C62.0010



C62.0010



C66.0010



C66.0020



C06.010




---

# SCHEMBRIS

## ETHELTON 5.001.S203

### 1921 TO 1964



C00.0010



C00.0020



C00.0030



C12.0010



# SCHWEPPES

PAYNEHAM

5.001.S205

1954 TO UNKNOWN

F13013

AMERICAN BEVERAGES

5.001.S006

1958 TO 1967



C01.0010



C01.0020



C01.0030



C02.0010



C02.0020



C02.0030



C02.0040



C03.0010



C04.0010



C04.0020



C05.0010



C05.0020



# SCHWEPPE'S 5.001.S205



C50.0010



C50.0020



C50.0030



C51.0010



C52.0010



C53.0010



C01.0010



C01.0020



C02.0010



C03.0010



C03.0020



C03.0030



C04.0040



C05.0010



C05.0020



C06.0010



C07.0010



C07.0020



C08.0010



C08.0020



C09.0010



C10.0010



C10.0020



C11.0010



C12.0010





A00.0010



A07.0010



A13.0010



A08.0010



A12.0010



# SHELLEYS EDWARDSTOWN 5.001.S212



C00.0010



C00.0020



C01.0010



C01.0020



C02.0010



C03.0010



C04.0010



C05.0010



C06.0010



C07.0010



C08.0010



C09.0010



C11.0010



# SONNEMANN'S

RENMARK  
5.388.001  
1926 TO 2002



C00.0010



C00.0020



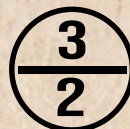
C50.0010



---

# SOUTH AUSTRALIAN BREWING

SOUTHWARK / THEBARTON  
1888 TO 2021







C16.0010



C0.0500



C00.0510



C40.0010



C40.0020



C44.0010



C41.0010



C00.1010



C00.1020



C00.1030



C45.0010



C127.0010



C31.0010



C33.0010



C100.0010



C00.0700



C00.0710



R41.0010



R41.0020



R42.0010



R00.0010



R00.0020





R30.0010



R30.0020



R31.0010



R31.0020



R32.0010



R128.0010



C64.0010



C00.0300



C00.0310



C00.0320



C00.0330



C00.0340



C60.0010



C60.0020



C60.0030



C60.0040



C60.0050



C61.0010



C67.0010



C67.0020



C67.0030



C67.0040



C67.0050





C67.0060



C66.0010



C62.0010



C62.0020



R62.0010



C65.0010



C65.0020



C65.0030



C71.0010



R60.0010



R60.0020



R60.0030



R65.0010



R65.0020



C00.0010



C00.0020



C00.0030



C00.0040



C00.0050



C00.0060



C20.0020



C20.0030



C20.0040





C20.0050



C20.0060



C21.0010



C21.0020



C26.0010



C19.0020



C19.0030



C23.0010



C15.0010



C13.0010



C19.0010



C20.0010



R20.0010



R20.0020



R20.0030



R20.0040



R21.0010



R00.0010



R19.0010



R21.0010



R19.0020



R23.0010



# STRINGERS

VICTOR HARBOUR

5.470.S007

1925 TO 1961



C00.0010



C00.0020



C00.0030



C20.0010



C21.0010



C22.0010



# TAWSPA

PAYNEHAM

5.001.S231

1937 TO 1954



C00.0010



C00.0020



# WALKERVILLE CO-OPERATIVE BREWING CO

## SOUTHWARK / THEBARTON

### 5.001.097

### 1844 TO 1939

<b>Walkerville Brewery (Levi's Brewery) Warwick Street</b>	<b>1844 to 1864</b>
W. H. Colyer & William Williams	1844
William Williams	1844 to 1852
Philip & Edmund Levi	1852 to 1856
White & Phillips	1856 to 1857
Thomson & Simms	1858 to 1860
James Thomson	1860 to 1864
<b>Walkerville Brewery (Richmond Street)</b>	<b>1844 to 1844</b>
James Thomson	1844
<b>Black Horse Brewery</b>	<b>1864 to 1889</b>
George Ball & George Huntley	1864 to 1879
George Huntley	1879 to 1889
<b>Walkerville Co-Operative Brewing Co.</b>	<b>1889 to 1898</b>
<b>Walkerville Co-Operative Brewing Co. Ltd</b>	<b>1898 to 1938</b>



C00.0010



C00.0020



C00.0030



C00.0040



C00.0050



C00.0060



C00.0100



C00.0110



# WAVERLEY BREWERY

**MITCHAM**  
**5.001.100**  
**1875 TO 1955**



**Waverley Brewery (North Terrace)**

Charles Mallen

**Waverley Brewery (Mitcham)**

Charles Mallen, Marie Mallen, John Haines & Arthur Bean

Charles Mallen, Marie Mallen & John Haines

Charles Mallen & Marie Mallen

Walter Mallen & William Bone

**Castlereagh Brewery (Mitcham)**

Adelaide Brewery Limited

Springfield Brewery Limited

**1875 to 1876**

1875 to 1876

**1878 to 1933**

1878 to 1879

1879 to 1890

1890 to 1909

1909 to 1934

**1934 to 1936**

1936 to 1938

1938 to 1955



C00.0010



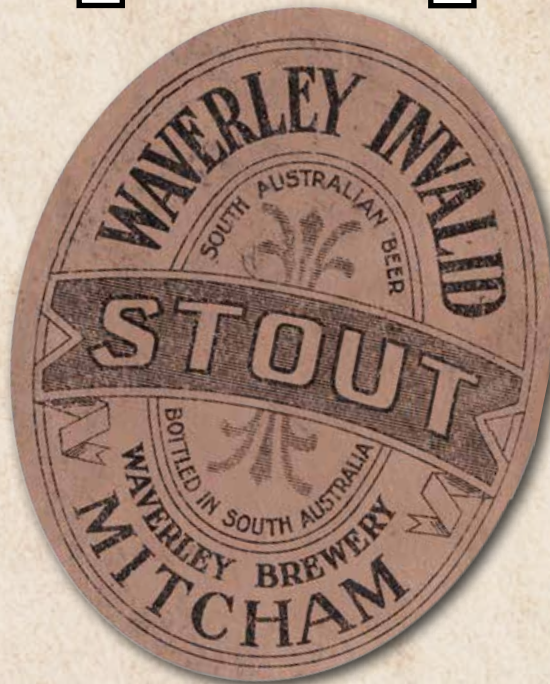
C30.0010



C40.0010



C40.0020



# WILLIAMS BREWERIES

**KENT TOWN**  
**5.001.106**  
**1898 TO 1975**  
**F49**

**The Co-Operative Mineral Waters Company Ltd**

Angus Street, Adelaide  
 Richmond Street, Walkerville

**The Co-Operative Mineral Waters Company Ltd (Boshter Beer Company)**

King William Street, Kent Town

**Williams Breweries**

Carrington Street, Adelaide  
 King William Street, Kent Town

**Williams Beverages Co-Op Ltd**

Murray Street, West Mitcham

**Williams Beverages**

**1898 to 1937**

1898 to 1907

1907 to 1921

**1921 to 1937**

1921 to 1937

**1935 to 1950**

1935 to 1937

1937 to 1950

**1950 to 1954**

1950 to 1975

**1954 to 1975**



C00.0010



C00.0020



C00.0030



C00.0040



C00.0050



C00.0060



C00.0070



C00.0080



C131.0010



C200.0010



C01.0010



C53.0010



C52.0010



C54.0010



C115.0010





# WILMSHURSTS

## MURRAY BRIDGE

### 5.287.5006

### C1962 TO 1970S

### F141



C00.0010



C00.0020



C01.0010



C02.0010



C07.0010



C03.0010



C04.0010



C08.0010



C05.0010



C06.0010



# WOODROOFES

## NORWOOD

### 5.001.S231

### 1878 TO PRESENT

### F33



C00.0010



C00.0020



C00.0030



C00.0040



C00.0050



C00.0060



C00.0070



C00.0080



C00.0090



C00.0100



C00.0110



C00.0120



C00.0130



C00.0140



C00.0150



C00.0160





C13.0010



C13.0020



C19.0010



C23.0010



C07.0010



C06.0010



C06.0020



C26.0010



C08.0010



C08.0020



C08.0030



C01.0010



C01.0020



C25.0010



C25.0020



C25.0030



C18.0010



C17.0010



C17.0020



C22.0010



C22.0020



C22.0030



C22.0040



C22.0050



C22.0060





C28.0010



C27.0010



C27.0020



C33.0010



C12.0010



C12.0020



C12.0030



C15.0010



C15.0020



C15.0030



C11.0010



C11.0020



C10.0010



C10.0020



C10.0030



C32.0010



C24.0010



C24.0020



C24.0030



C31.0010



C34.0010



C34.0020





A00.0010



A00.0020



A13.0010



A08.0010



A17.0010



A01.0010



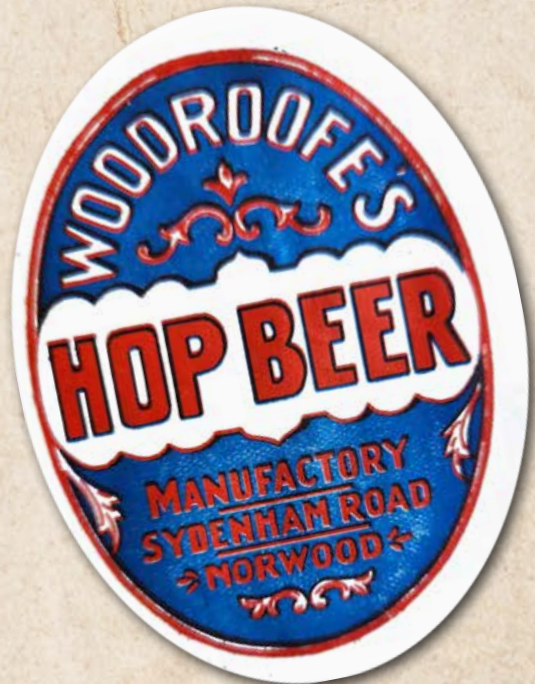
A01.0020



A01.0030



A14.0010



## LABEL \ CAP NUMBERING DETAILS

# 5.001.01.01.0010

The first digit is are State code, the postcode prefix is used.

2. New South Wales / ACT
3. Victoria
4. Queensland
5. South Australia
6. Western Australia
7. Tasmania
8. Northern Territory

The third digits are the company codes, listed in alphabetical order in the town or city. Breweries are listed just as a number,

S - Softdrink Company  
M - Microbrewery  
H - Hotel

The second digits are the location codes, a code for each town or city in the state, listed alphabetically.

The forth digits are the drink type code. usually listed in age order, with the oldest known drink listed first.

C - Bottle Cap  
R - Bottle Rip top cap  
A - Aluminium Twist Cap  
T - Can  
G - Stoneware Ginger Beer

The last digits are the label code for the drink listed. Usually listed in steps of 10 to allow for new labels to be inserted in future revisions.

K - Keg Label  
B - Back Label  
N - Neck Label  
S - Special Label

### Other label code details

- Δ A Black and White copy of the original label, colours unknown.
- † Digitally redrawn label from a partially recovered label, colours and design might vary slightly.
- # Digitally redrawn from a period hand drawn design, colours either unknown or referenced from similar labels, and the main design is not 100% accurate.



